

# Can your IT infrastructure keep up with the AI boom?

## New data from the Flexential 2024 State of AI Infrastructure report reveals many enterprises' current IT infrastructure may not match their ambitious AI plans

Excitement for AI is palpable across industries – but few cloud deployments and data centers are equipped to support AI's high-density, low-latency requirements.

To gain insight into how organizations are navigating this challenge, Flexential surveyed 350 IT leaders at organizations with over \$100 million in annual revenue, including 100 respondents at organizations with over \$2 billion in annual revenue.



### INSIGHT 1

## Organizations that fail to execute their AI roadmaps face significant consequences

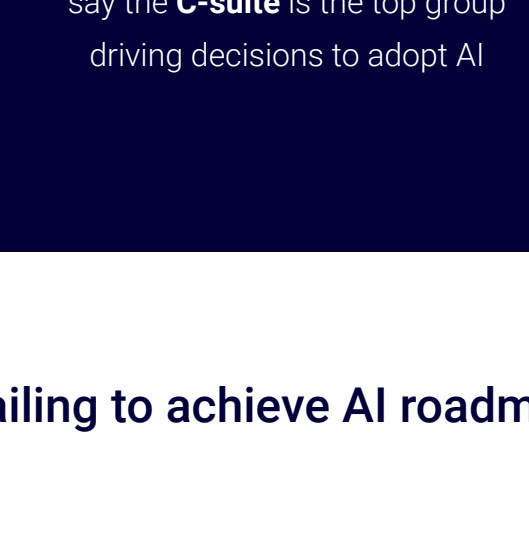
Nearly all organizations have a **documented AI roadmap**.

Pressure to make AI progress comes from the **highest levels**.

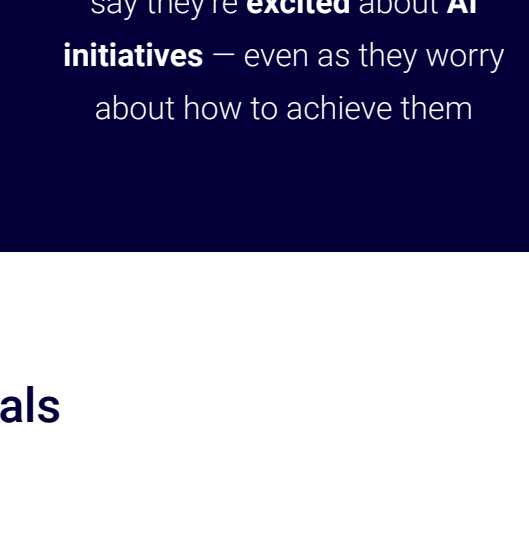
How **IT leaders** are feeling:



say **increasing infrastructure investments** is part of the plan

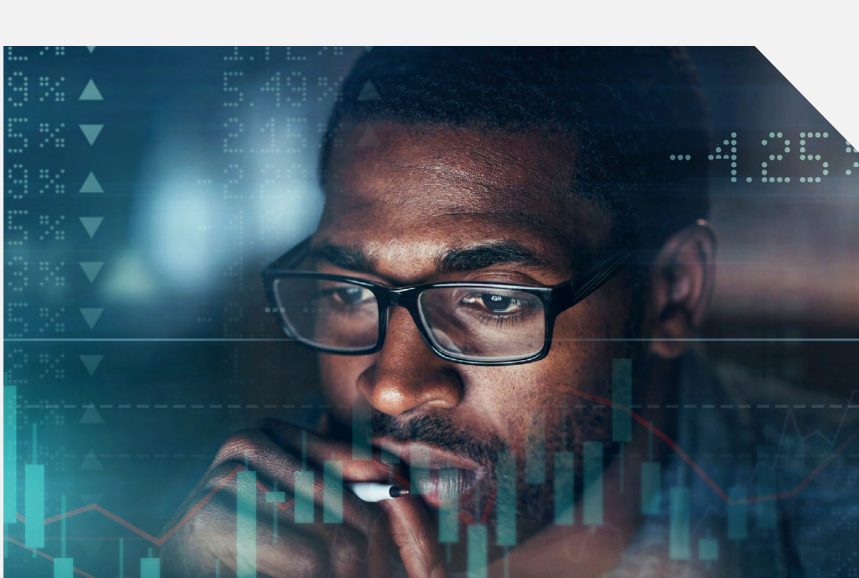
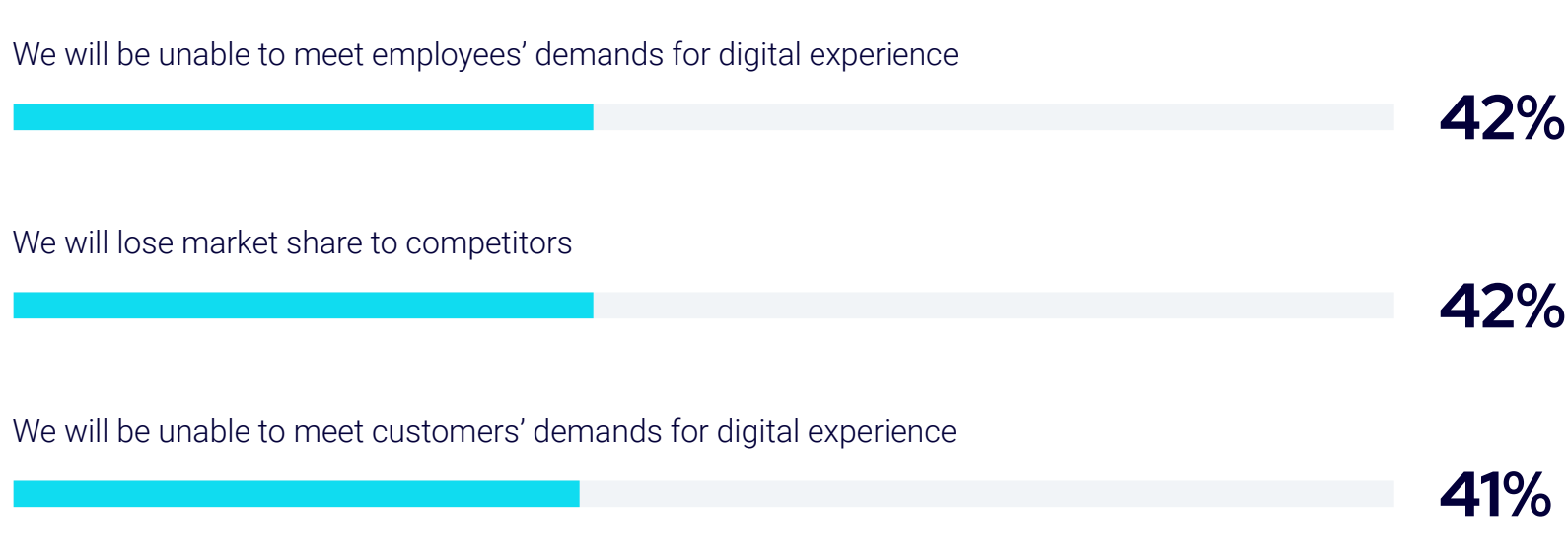


say the **C-suite** is the top group driving decisions to adopt AI



say they're **excited** about **AI initiatives** – even as they worry about how to achieve them

### Top consequences of failing to achieve AI roadmap goals

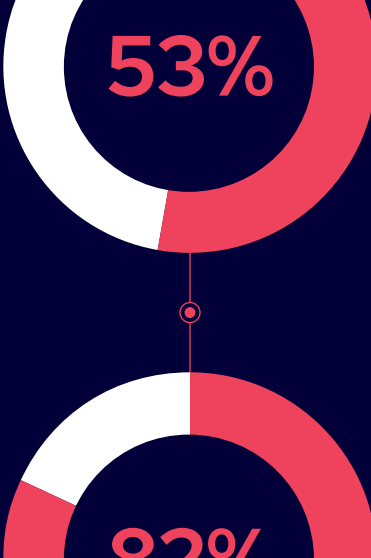


**93%**

agree there is a **greater expectation to minimize time-to-revenue** for AI-driven IT infrastructure today compared to five years ago

### INSIGHT 2

## Talent and infrastructure gaps persist, preventing AI progress

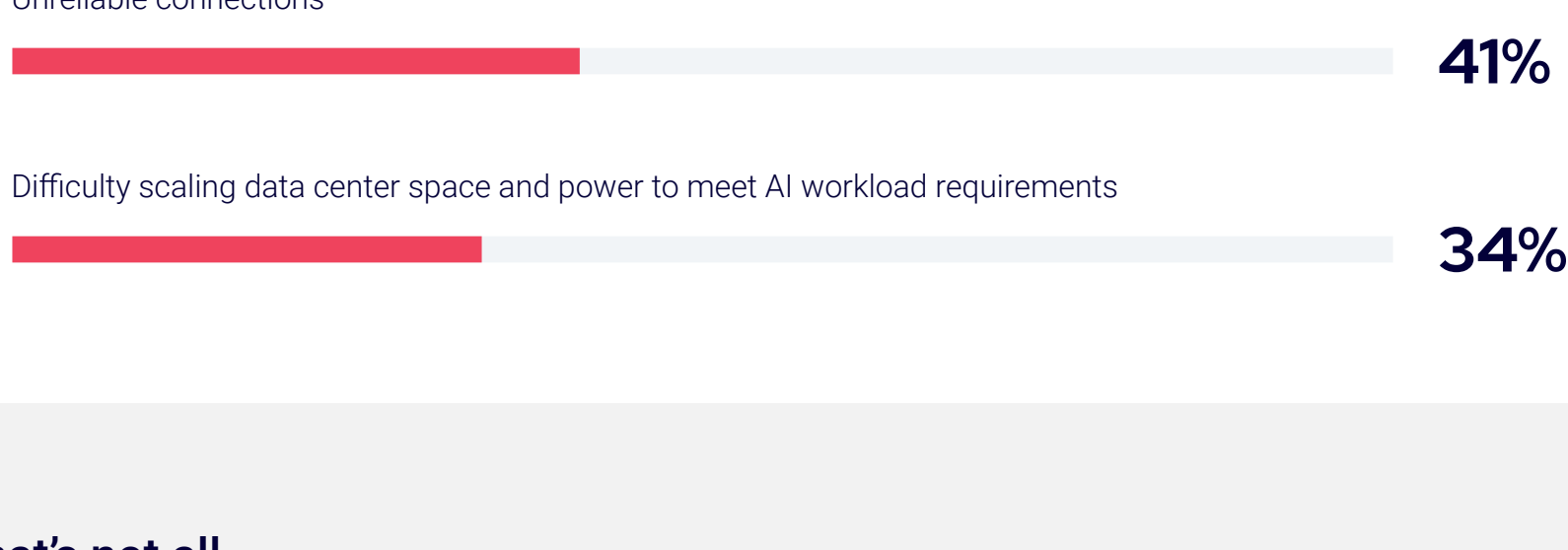


of IT leaders say their organization has experienced specialized skills or infrastructure staffing shortage in the past 12 months



of organizations have also faced performance issues with their AI workloads in the past 12 months

### Top 3 performance issues with AI applications or workloads in the past 12 months



### But that's not all...



**95%**

of IT leaders believe the increased investment in AI has also **increased vulnerability to cyberthreats**

**40%**

say their cybersecurity teams don't understand **how to protect AI applications** and workloads



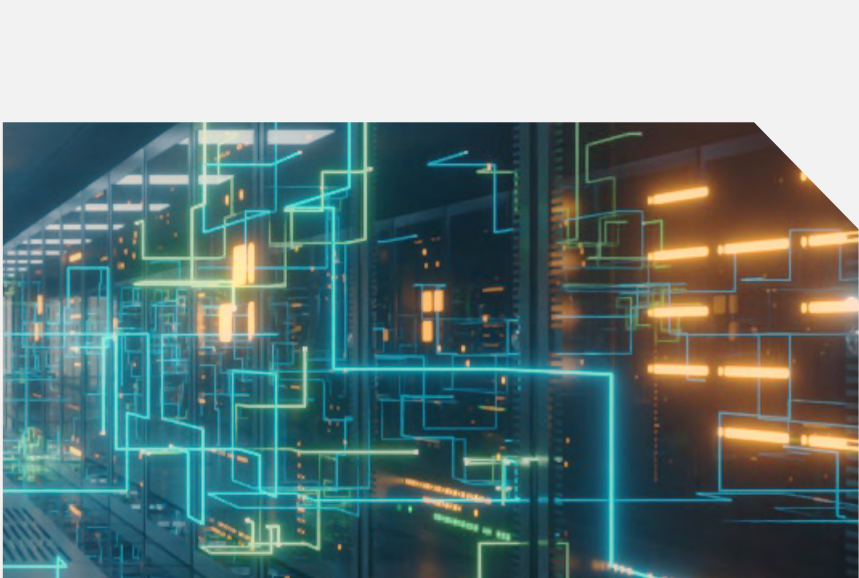
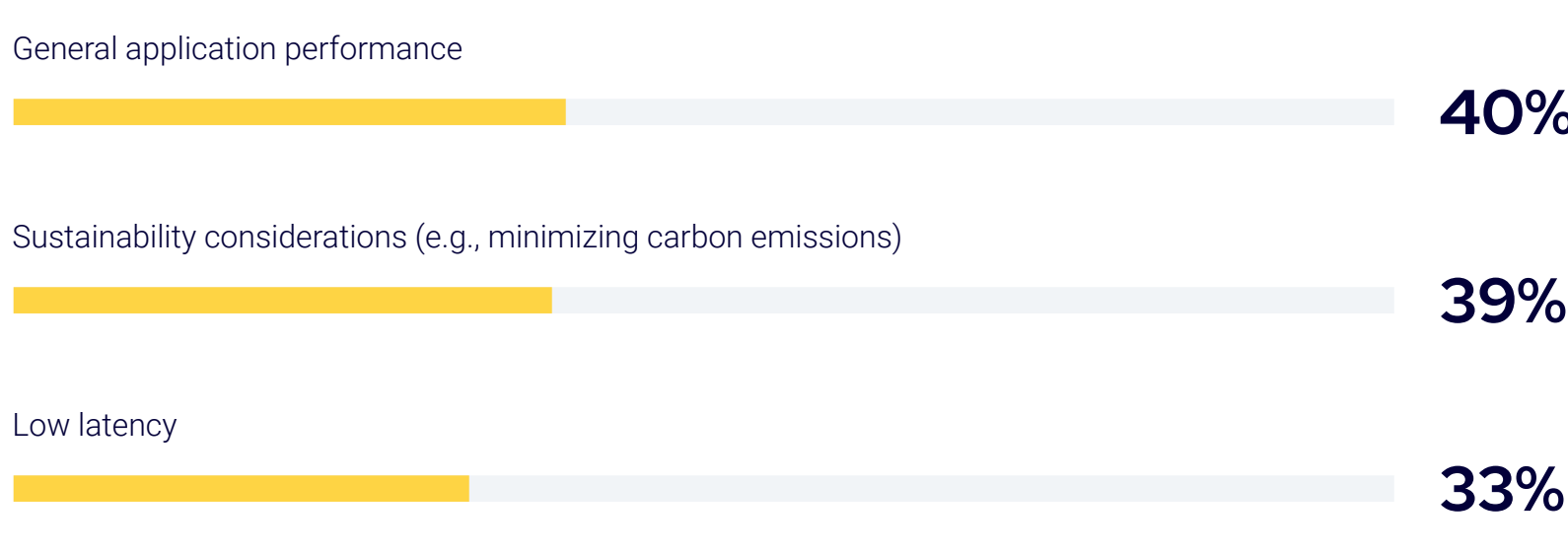
### INSIGHT 3

## Organizations seek strategies to improve the security, performance, and cost of AI workload deployments



of IT leaders say their organizations have removed AI applications and workloads from the public cloud

### Top 5 factors when considering where to deploy an AI workload on the cloud (i.e., private versus public cloud)



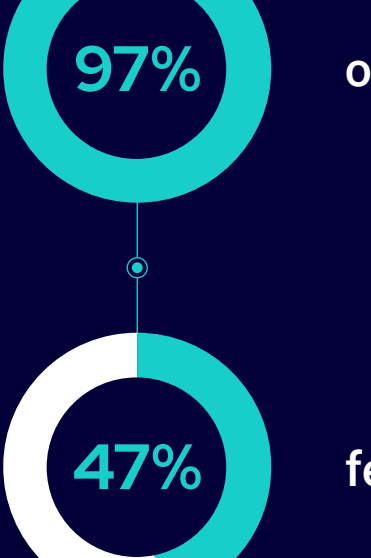
**51%**

say their organizations are leasing rack space in **third-party colocation data centers** to process data closer to the edge of the network

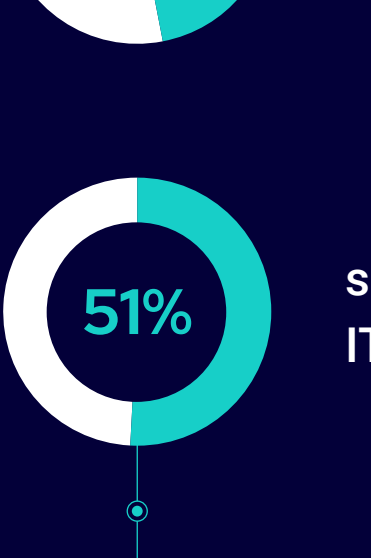
But only **24%** say they've deployed the most GPUs there, indicating there's room to be even more strategic

### INSIGHT 4

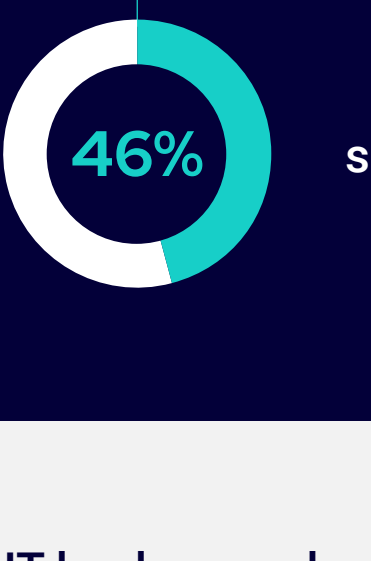
## Data center sustainability is a board-level issue, and IT leaders are feeling the heat



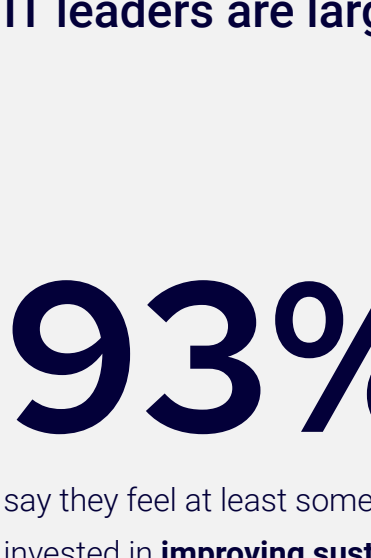
of IT leaders say they've felt pressure to improve IT sustainability



feel that pressure more now than they did five years ago



say the **C-suite** is a top group putting pressure on IT leaders to improve IT infrastructure sustainability



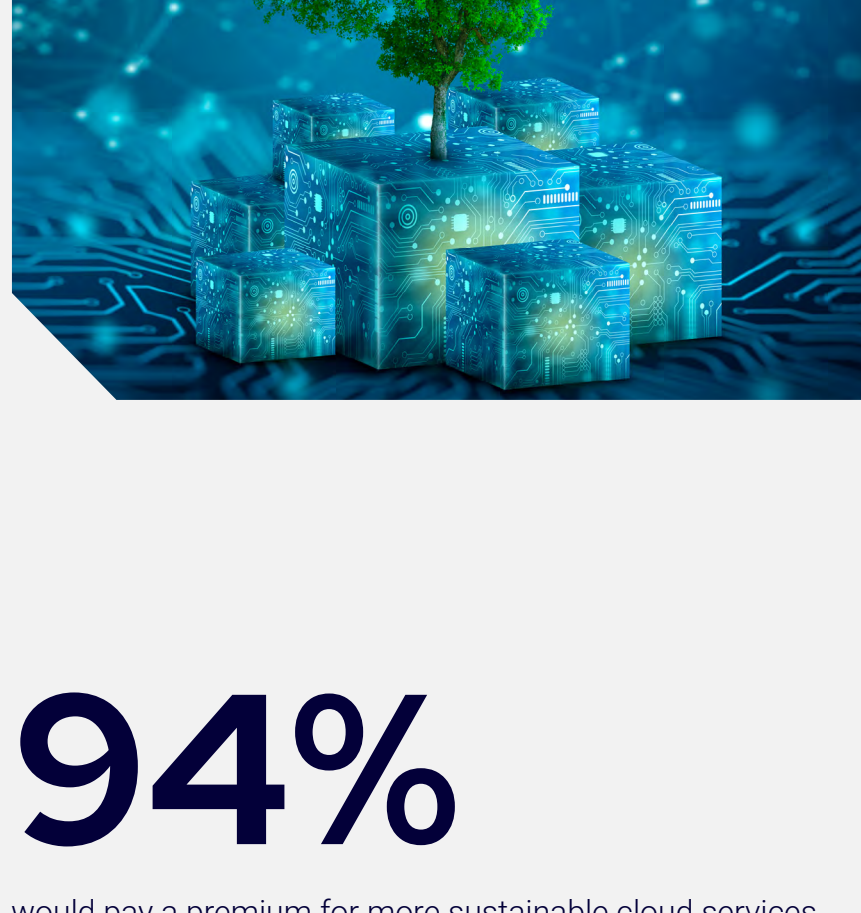
say the same about their organization's board

### IT leaders are largely aligned with their bosses' views on sustainability

**93%**

say they feel at least personally invested in **improving sustainability** in IT

53% believe the issue doesn't get enough attention



**94%**

would pay a premium for more sustainable cloud services

45% would pay more than a 10% increase

### CONCLUSION

## Successful AI adoption demands IT leaders reimagine old infrastructure strategies

As AI adoption grows, IT leaders must prioritize a fresh approach to building infrastructure that's simultaneously scalable, fast, secure, and sustainable.

It's a tall order – one you can't fulfill on your own. An experienced data center partner can provide the high-density compute capacity, robust security measures, software-led interconnection, and sustainable technologies required to support your critical AI workloads.

Looking for more insights?

Check out the full 2024 State of AI Infrastructure report.

Learn why Flexential is leading the industry in secure, efficient, and future-ready data center infrastructure.

[Schedule a Consultation](#)